

center**v**ue



drs**plus**

Innovating a Higher Standard in Retinal Imaging



Focus. Quality.
Comfort.

DRSplus **confocal fundus imaging system** by CENTERVUE uses white LED illumination to produce TrueColor and detail-rich images, setting a new effective and efficient standard of **retinal imaging**.



TrueColor Confocal Technology, with white LED, promotes **detailed 45° retinal images** and allows to **scan through cataract**.

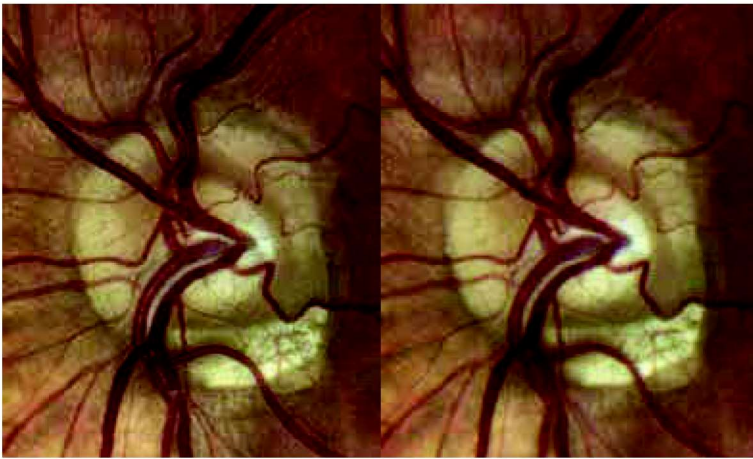


The confocal technology permits imaging through **pupils as small as 2.5 mm**, without need of dilation, ensuring a comfortable patient experience.



Fast Fully Automated operation requires minimal staff training to acquire the highest quality images, speeding up the examination time.





Stereo pair

Stereo Viewer Technology.

DRSplus Stereo Viewer Technology (optional) automatically captures two separate photos of the nasal field, at different angles and different focal planes (bifocal), creating improved 3D perception of the disc.



External Eye

External Eye Photography.

External Eye imaging allows for documentation of eye surface and cornea conditions.

DRSplus Remote Viewer.

The DRSplus Remote Viewer (optional) is a browser-based software license that allows for reviewing from any network computer on the same local area network (LAN), with user login and password protection.

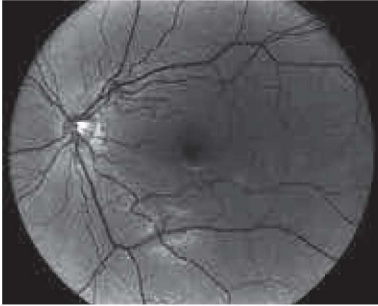


Provide your patient with a **comfortable exam experience.**

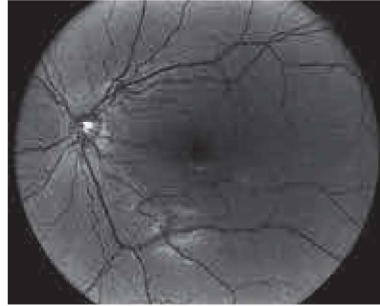
DRSplus is designed to optimize patient comfort during the exam, allowing for the improvement of workflow and clinic efficiency.

CENTERVUE DRSpplus **provides different imaging modalities.**

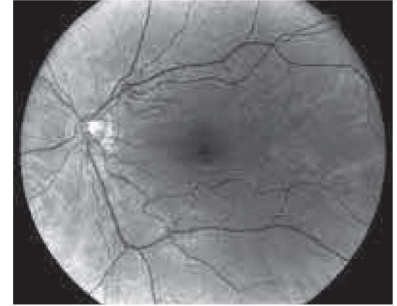
TrueColor, Red-free, Blue and Red channels, External Eye, Stereo view of the ONH and Mosaic.



Red-free



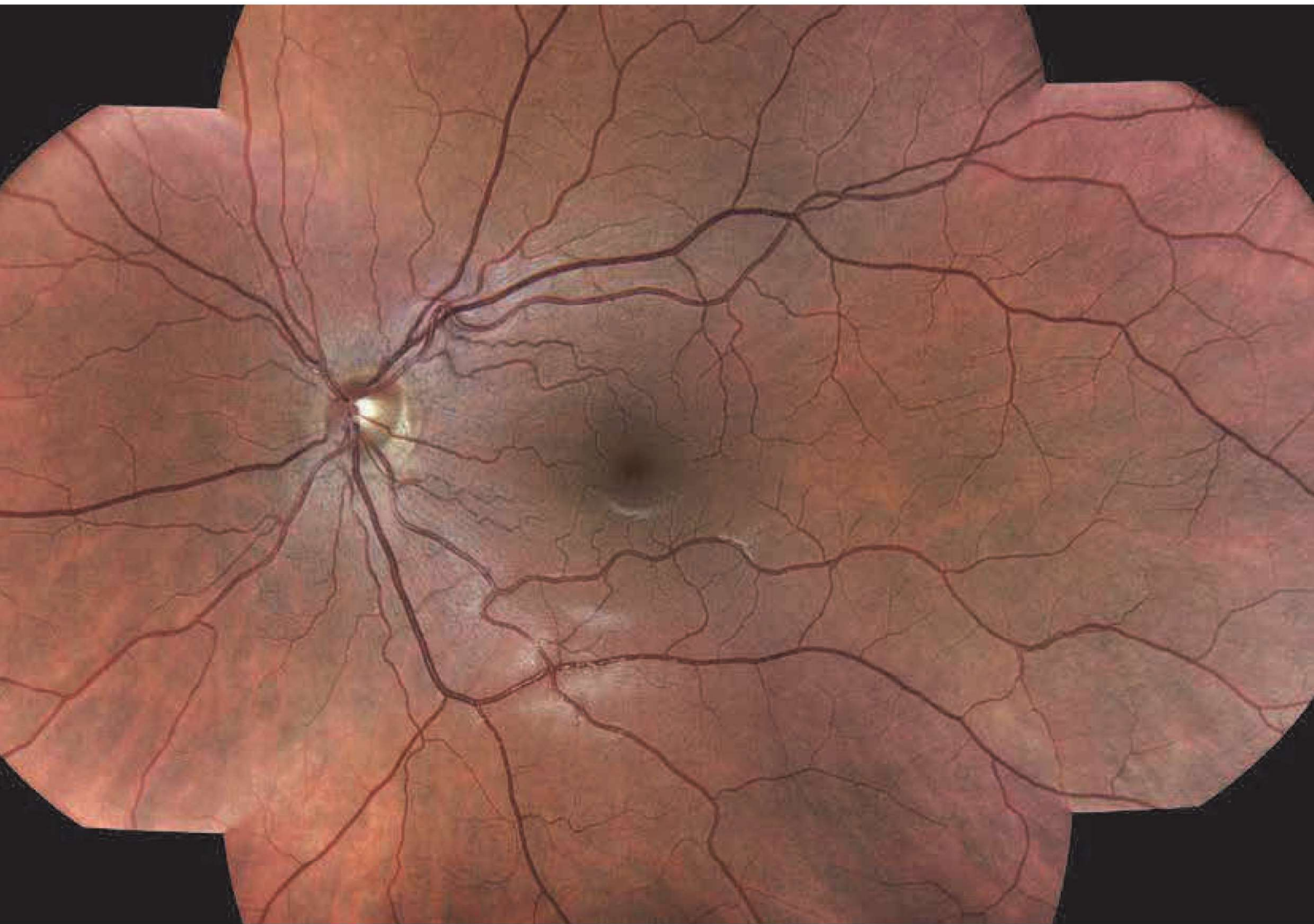
Blue



Red

The Mosaic function allows a **panoramic view of the retina, up to 80°.**

By using a special stitching algorithm, DRSpplus automatically combines different fields without user intervention.



Technical specifications

Fundus Imaging System Features

Field of View	Single image (W x H): 45° x 40° Mosaic up to 9 fields (W x H): 83° x 78°
Light Sources	White LED: 440-650 nm Infrared LED: 825-870 nm
Imaging Modalities	TrueColor, Red-Free*, Blue*, Red*, External Eye, Stereo**, Mosaic**
Autofocus Adjustment Range	-15D to +15 D
Automatic Operations	Auto-alignment, Auto-focus, Auto-exposure, Auto-capture, Auto-montage
Minimum Pupil Size	Non-myd 2.5 mm
Working Distance	25 mm
Image Size	10 Megapixels
Resolution	80 pixel/degree
Fixation Targets	Internal/External**
Dynamic Programmable Internal Fixation Target	Central, Nasal, Temporal, Central-Nasal, Superior, Inferior, Superior-Temporal, Superior-Nasal, Inferior-Temporal, Inferior-Nasal

Computer/Accessories

Display	Integrated 10.1" (1280 x 800) Color, Capacitive, Multi-touch
Hard Drive	SSD 512 GB
Interfaces	USB port 2.0 x 3, Gigabit Ethernet Port x 1
Export / Import	jpeg, pdf, DICOM**, Web API**
Accessories	Remote Viewer** up to a maximum of 5 remote stations

Dimensions/Power supply

Size (W x H x D)	300 mm (11.8") x 450 mm (17.7") x 650 mm (25.6")
Weight	11 Kg (24 lbs)
Rated Voltage	100-240 VAC
Frequency	50-60Hz
Power Consumption	60W
Electrical Class	IEC 60601-1 Class I

*Digital filters

**Optional accessory